

# HOWARD COUNTY



## BY THE NUMBERS

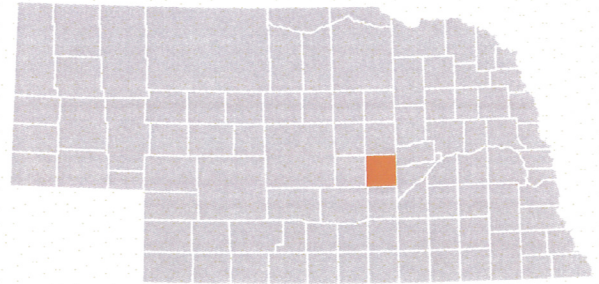
### DEMOGRAPHICS



KIDS 19 & UNDER: 1,679<sup>1</sup>

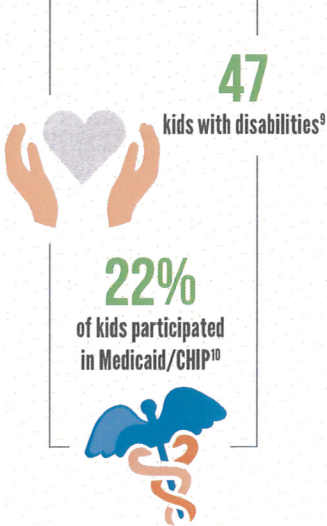
White, non-Hispanic: <sup>3</sup>	93%
White, Hispanic: <sup>4</sup>	4%
Black/African American: <sup>5</sup>	1%
American Indian: <sup>6</sup>	0%
Asian or Pacific Islander: <sup>7</sup>	0%
2+ Races, or non-White, Hispanic: <sup>8</sup>	2%

TOTAL POPULATION: 6,429<sup>2</sup>

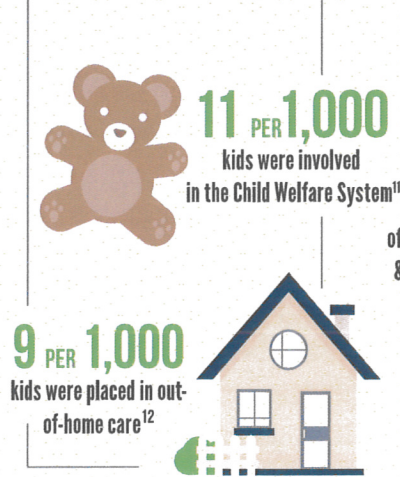


## CHILD WELL-BEING AT A GLANCE

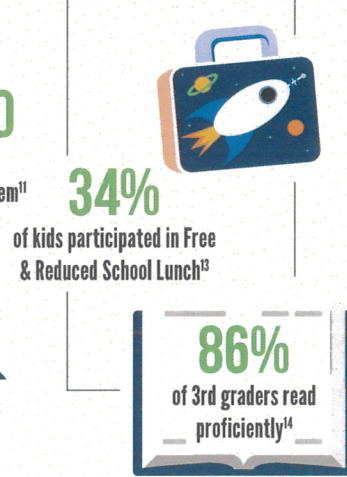
### HEALTH



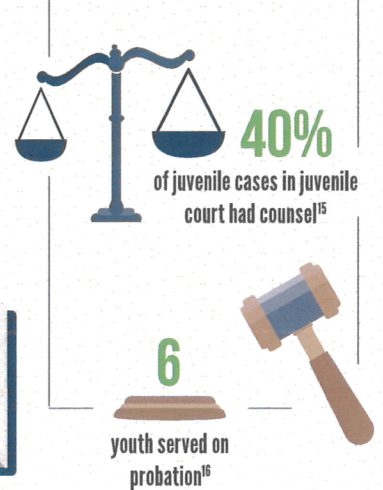
### CHILD WELFARE



### EDUCATION

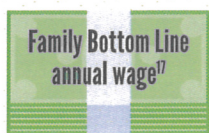


### JUVENILE JUSTICE

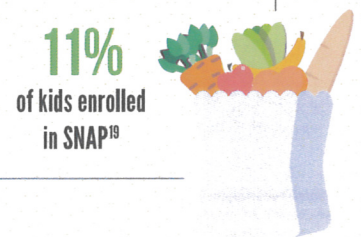


### ECONOMIC STABILITY

**\$42,058**  
2 adults, 1 infant,  
1 toddler



**\$34,789**  
1 adult, 1 infant,  
1 toddler



### SOURCES

1. - 9. U.S. Census Bureau, 2015 American Community Survey 5-year estimates, 10. - 12. Department of Health and Human Services, 13. - 14. Nebraska Department of Education, 15. JUSTICE, Administrative Offices of the Courts, 16. Nebraska Office of Probation Administration 17. Center for Women's Welfare, Updated to 2016 Dollars by Voices for Children, 18. U.S. Census Bureau, 2015 American Community Survey 5-year estimates, 19. Department of Health and Human Services

Due to data limitations, information presented on this fact sheet is for the entire county in which any part of the legislative district lies.