

HAMILTON COUNTY



BY THE NUMBERS

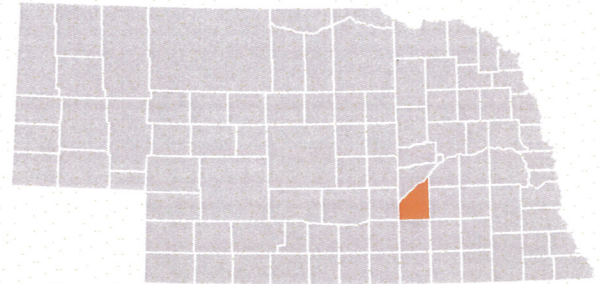
DEMOGRAPHICS



KIDS 19 & UNDER: 2,449¹

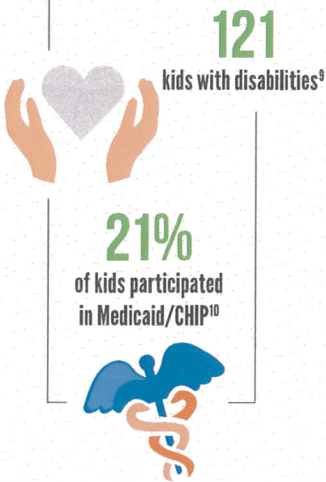
White, non-Hispanic: ³	91%
White, Hispanic: ⁴	5%
Black/African American: ⁵	0%
American Indian: ⁶	0%
Asian or Pacific Islander: ⁷	0%
2+ Races, or non-White, Hispanic: ⁸	2%

TOTAL POPULATION: 9,186²

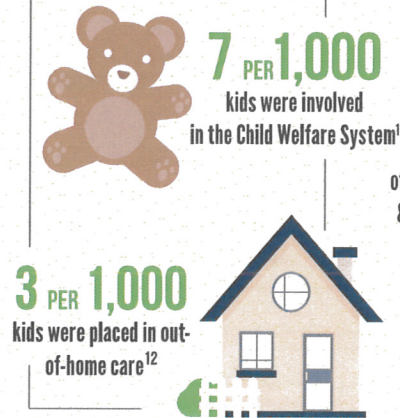


CHILD WELL-BEING AT A GLANCE

HEALTH

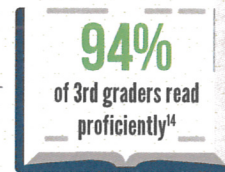


CHILD WELFARE

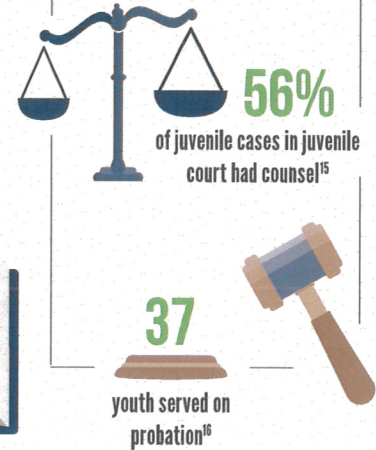


EDUCATION

34%
of kids participated in Free & Reduced School Lunch¹³

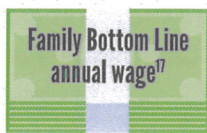


JUVENILE JUSTICE

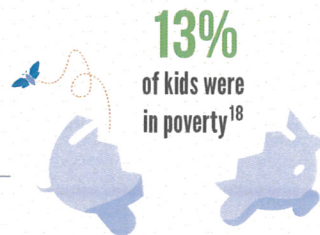


ECONOMIC STABILITY

\$42,058
2 adults, 1 infant,
1 toddler



\$34,789
1 adult, 1 infant,
1 toddler



8%
of kids enrolled in SNAP¹⁹



SOURCES

1. - 9. U.S. Census Bureau, 2015 American Community Survey 5-year estimates, 10. - 12. Department of Health and Human Services, 13. - 14. Nebraska Department of Education, 15. JUSTICE, Administrative Offices of the Courts, 16. Nebraska Office of Probation Administration 17. Center for Women's Welfare, Updated to 2016 Dollars by Voices for Children, 18. U.S. Census Bureau, 2015 American Community Survey 5-year estimates, 19. Department of Health and Human Services

Due to data limitations, information presented on this fact sheet is for the entire county in which any part of the legislative district lies.